

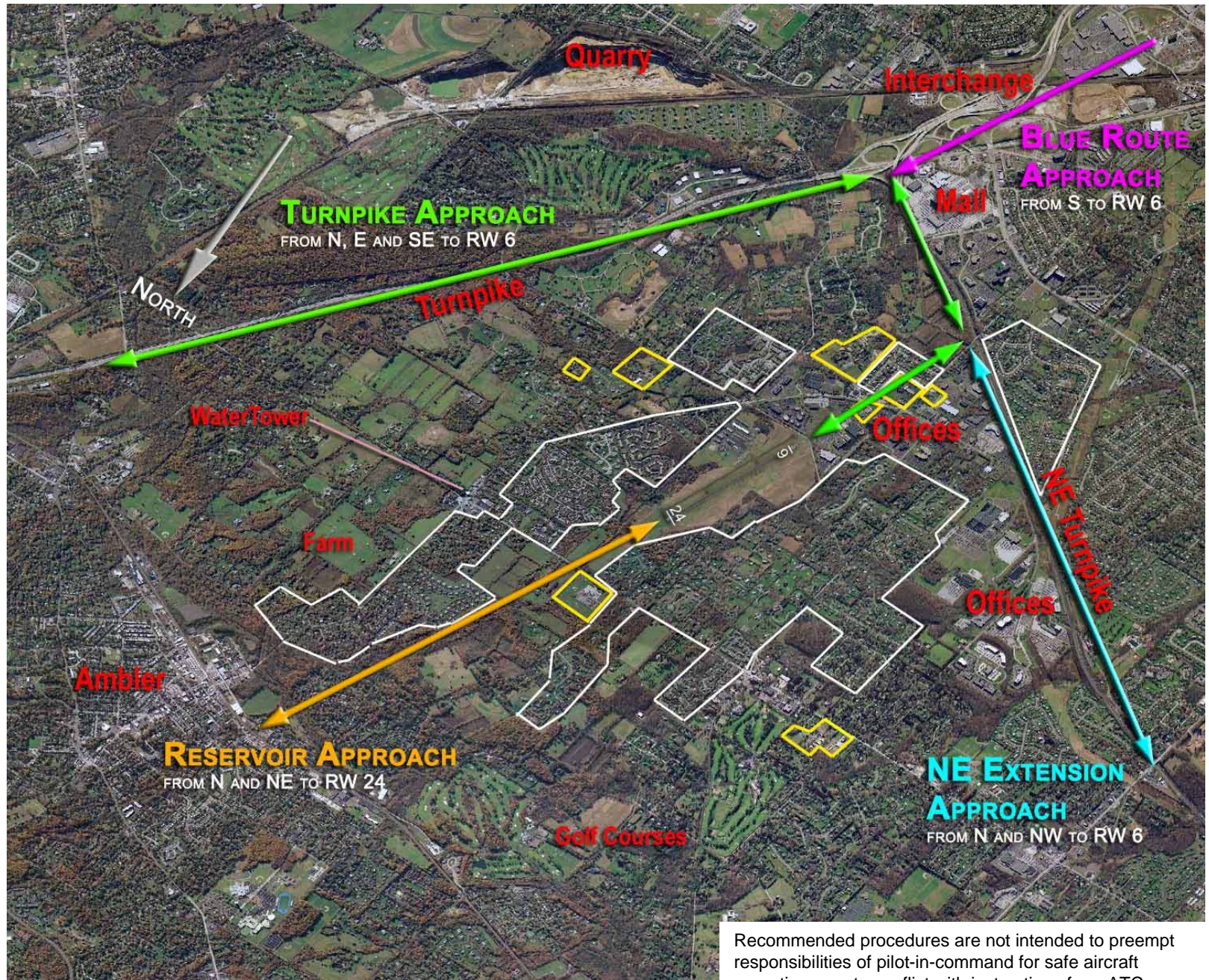
**Wings Field (LOM)  
Noise Abatement  
Procedures:  
Helicopters**

- Voluntary restraints from flying between 11PM and 6AM.
- Pattern altitude for helicopters is 2,000' MSL (1,700' AGL).
- To minimize number of helicopter flights over same noise sensitive neighborhoods and consistent with traffic pattern safety and weather conditions, helicopters arriving from NE for RW 24 should plan to depart to the SW on RW 24, and vice versa for RW 6.
- Helicopters inbound to Wings Field are requested to follow preferred arrival routes using major highways at a safe altitude until beginning final approach for landing.
- Use reservoir (lake) on edge of Ambler as reference point for approach to RW 24.
- Descents and ascents should be made in accordance with manufacturer's recommended noise abatement procedures.
- Avoid flying low over schools and residential areas.
- Wait times with engines running cannot exceed 5 minutes.

PHL Approach: 126.85

AWOS-3: 118.925

CTAF/UNICOM: 123.00



Recommended procedures are not intended to preempt responsibilities of pilot-in-command for safe aircraft operations nor to conflict with instructions from ATC or those that are the exclusive authority of the FAA.